

ENCANTO

*eterno*

EN

**SONNI**



**SONNI**  
PLAYA DEL CARMEN

22nd & 24th Streets between 5th and 10th Avenues  
Studios - 1 Bedroom - 2 Bedrooms Lock-Off

**SONNI**  
PLAYA DEL CARMEN

## Eternal *charm*

In the heart of the Riviera Maya, where the sun gently kisses the crystal-clear waters of the Caribbean, arises a unique destination where timeless elegance meets vibrant Caribbean life.

*Welcome to Sonni*

Minimalist • Functional • Organic • Natural • Vibrant



# *Timeless* style

SONNI, the new development by Ekasa. It merges the sophistication of **Mid Century Modern style with the natural beauty of Playa del Carmen.**

These principles combine to create a timeless style that has left a lasting mark on interior design and contemporary furniture, focusing on offering **family-friendly amenities and spaces for business**, integrating with the surrounding nature.

The goal is to provide a modern and harmonious lifestyle in a Caribbean setting.



# Facade 24<sup>th</sup> Street

All images presented are for illustrative purposes only and may change without prior notice.



**SONNI**

# Location

## 22 & 24

STREETS BETWEEN  
5<sup>th</sup> Ave & 10<sup>th</sup> Ave

### NEAR EVERYTHING!

RESTAURANTS, SHOPPING CENTERS,  
SPORTS UNIT, SUPERMARKETS  
TOURIST ATTRACTIONS, NIGHTLIFE  
AND MUCH MORE

[Link to Google Maps](#)

**SONNI**  
PLAYA DEL CARMEN





**125** UNITS



**4** TYPOLOGIES

- Studios
- 1 Bedroom
- 2 Bedrooms A Lock-Off
- 2 Bedrooms B Lock-Off



**15** COMMERCIAL PREMISES

**FULL ACCESSIBILITY** for people with reduced mobility,  
with ramps and stretcher elevators throughout the complex.





## Lobby

All images presented are for illustrative purposes only and may change without prior notice.

**SONNI**



# SONNI



**Lobby**

All images presented are for illustrative purposes only and may change without prior notice.

**SONNI**

# +20 AMENITIES



**LOBBY**



**UNDERGROUND  
PARKING**



**SECURITY  
CAMERAS**



**STRETCHER  
ELEVATORS**



**GYM**



**POOL**



**FAMILY POOL**



**CHILDREN'S  
POOL**



**SUNBATHING  
AREAS**



**JACUZZI**



**SAUNA**



**2 SPA ROOMS**



**WET BAR**



**BARBECUE  
AREA**



**COWORKING**



**PET ZONE**



**JUNIORS  
CLUB**



**KIDS CLUB**



**TERRACES**



**COFFEE BAR**



**COMMERCIAL  
PREMISES**



# Inclusion and *innovation*

A vibrant **coworking** space designed to foster creativity and collaboration among our residents. Additionally, we are proud to offer **full mobility accessibility**, with ramps and **stretcher elevators** throughout the community, ensuring that everyone can fully participate in our community.

Join us and experience a new standard of living and working, where inclusion and innovation are priorities.

**Coworking**

All images presented are for illustrative purposes only and may change without prior notice.



*Ground floor*  
**Juniors Club**

All images presented are for illustrative purposes only and may change without prior notice.

**SONNI**

PETZONE

*Ground floor*  
**Pet Zone**

All images presented are for illustrative purposes only and may change without prior notice.

**SONNI**



*Ground Floor*  
**Terraces & Pet Zone**

All images presented are for illustrative purposes only and may change without prior notice.



**SONNI**



# Fun for *all ages*

Enjoy a complete lifestyle with amenities designed to meet the needs of each member of the family, from recreational areas to relaxation spaces.

**Kids Club**, a paradise of fun for the little ones, where imagination has no limits and every day is an adventure.

**Spa & Sauna**, so that adults can relax and recharge their batteries, enjoying moments of peace and well-being in the midst of the daily hustle and bustle.

*Rooftop*  
**Terraces – Family Pool – Barbecue Area**

All images presented are for illustrative purposes only and may change without prior notice.



*Rooftop*  
**Bar - Wet Bar - Pool - Sunbathing Areas**

All images presented are for illustrative purposes only and may change without prior notice.

**SONNI**





*Rooftop*  
**Wet Bar**

All images presented are for illustrative purposes only and may change without prior notice.

**SONNI**



*Rooftop*  
**Terrace - Pool - Sunbathing Area - Jacuzzi - Sauna - Spa**

All images presented are for illustrative purposes only and may change without prior notice.

**SONNI**



*Rooftop*  
**Bar - Wet Bar - Pool**

All images presented are for illustrative purposes only and may change without prior notice.

**SONNI**



*Rooftop*  
**Family Pool - Sunbathing Area - Terrace**

Presented for illustrative purposes only and may change without prior notice.

**SONNI**



*Rooftop*  
**Family Pool - Sunbathing Area - Barbecue Area**

All images presented are for illustrative purposes only and may change without prior notice.

**SONNI**



*Rooftop*  
**Hammock Area**

All images presented are for illustrative purposes only and may change without prior notice.

**SONNI**



*Rooftop*  
**Kids Club**

All images presented are for illustrative purposes only and may change without prior notice.

**SONNI**



*Rooftop*  
**Kids Club**

All images presented are for illustrative purposes only and may change without prior notice.

**SONNI**





The Breathing Room

*Rooftop*  
**Spa Rooms**

All images presented are for illustrative purposes only and may change without prior notice.

**SONNI**



Kids Club

Elevator

Bathrooms

Spa Rooms

Sauna

Jacuzzi

Hammock Area

Exterior Terrace

Terrace

Coworking Terrace

Terrace

Childrens Pool

Sunbathing Area

Terrace

Bar

Sunbathing Area

Family Pool

Juniors Club Terrace

Wet Bar

Pool

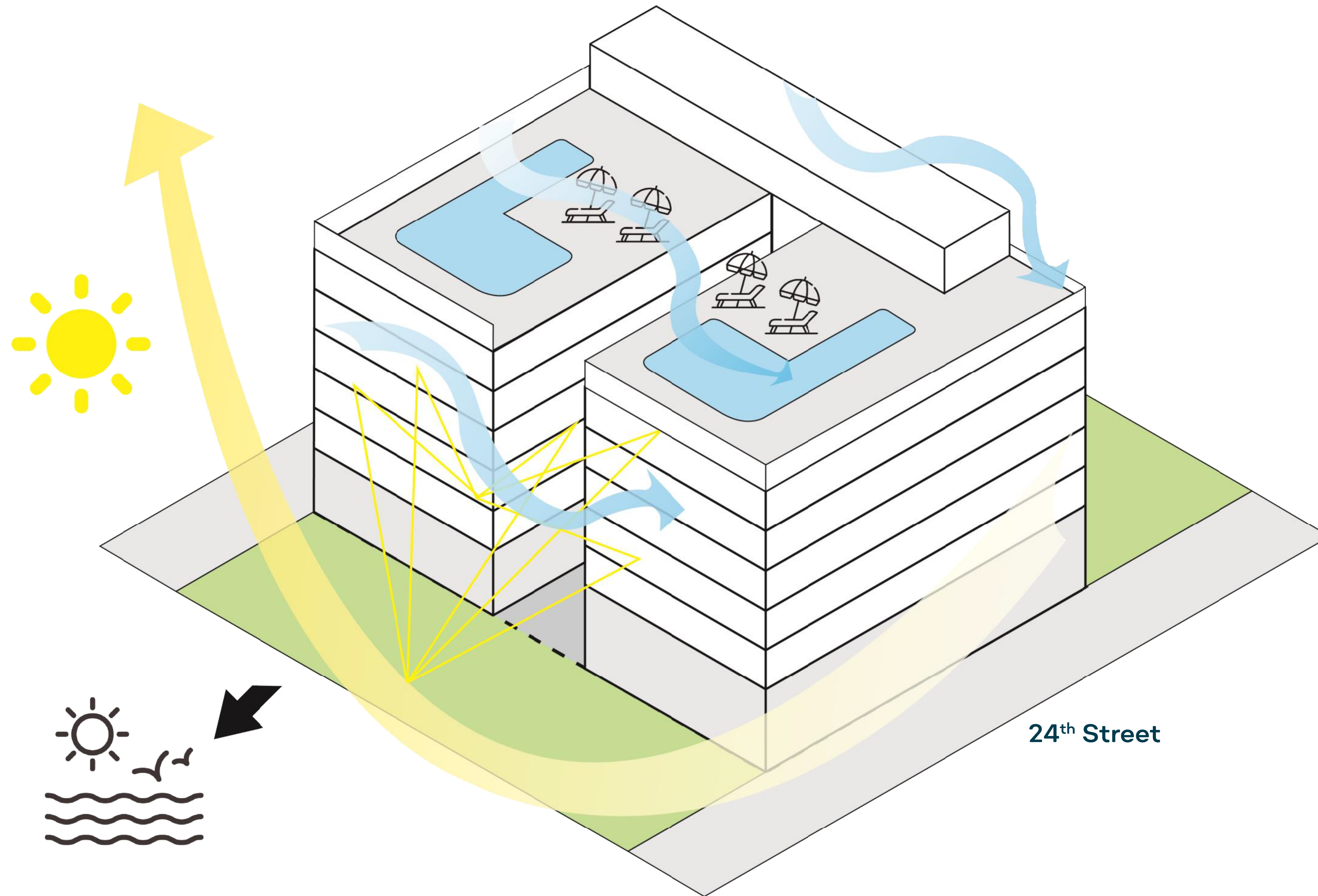
Barbecue Area

Pet Zone

# Rooftop Amenities

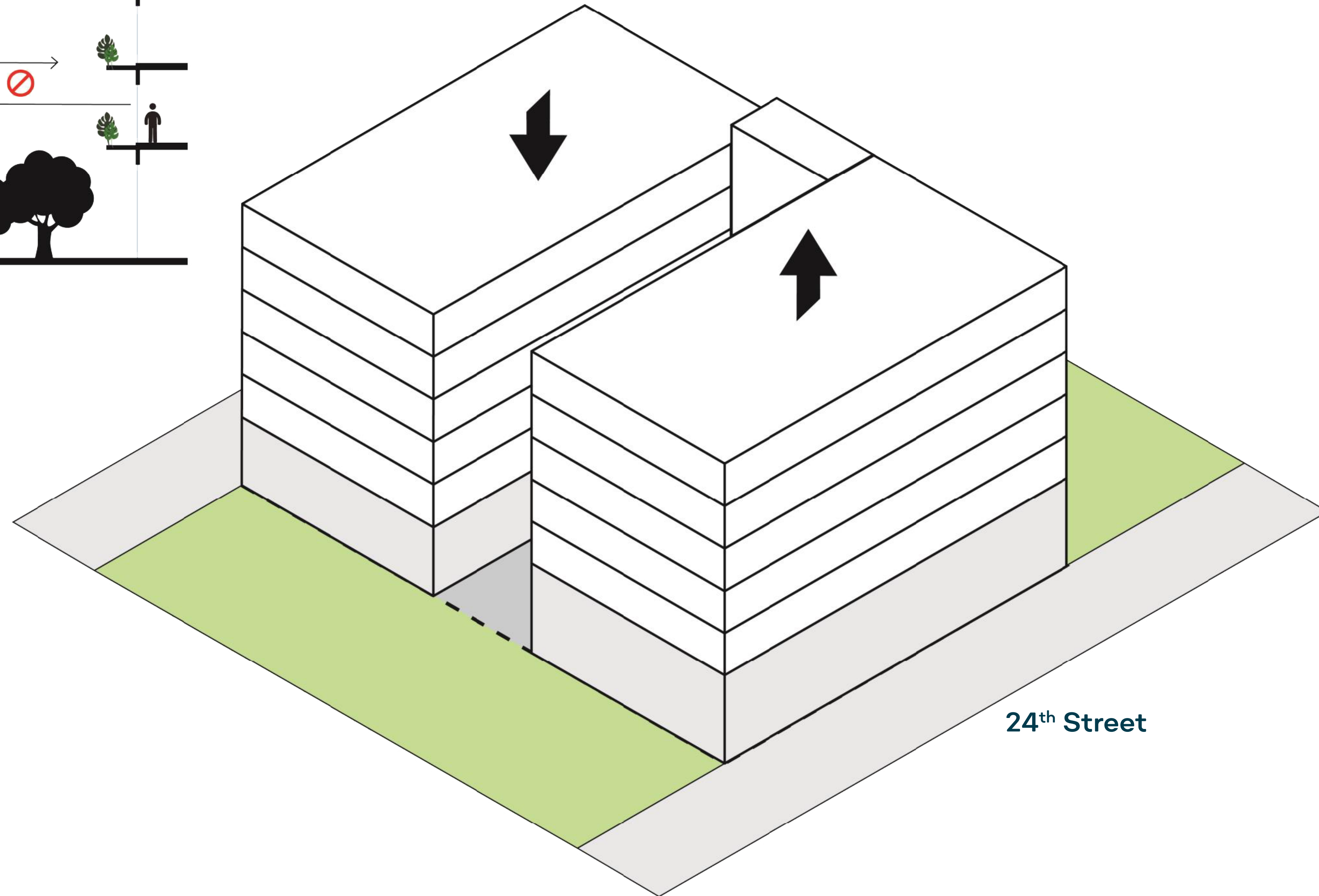
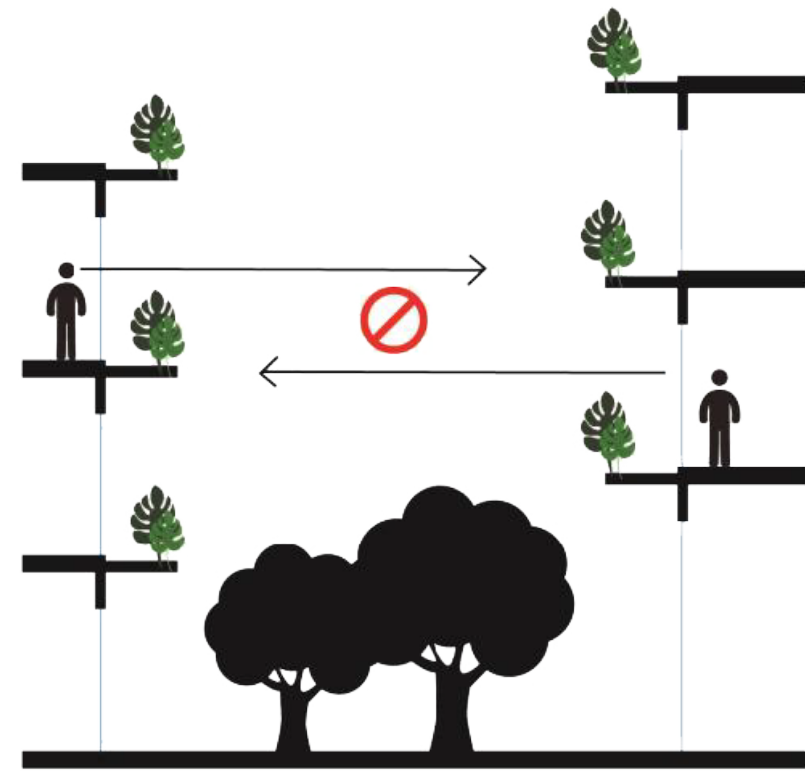
All images presented are for illustrative purposes only and may change without prior notice.

**SONNI**



## Bioclimatism

Criterion that seeks to ensure that the designs of habitable spaces are in accordance with the climatic conditions of the place



## Privacy

Creation of spaces that protect the privacy of the inhabitants both inside the home and in its outdoor areas



## Towers

Architectural section

**SONNI**

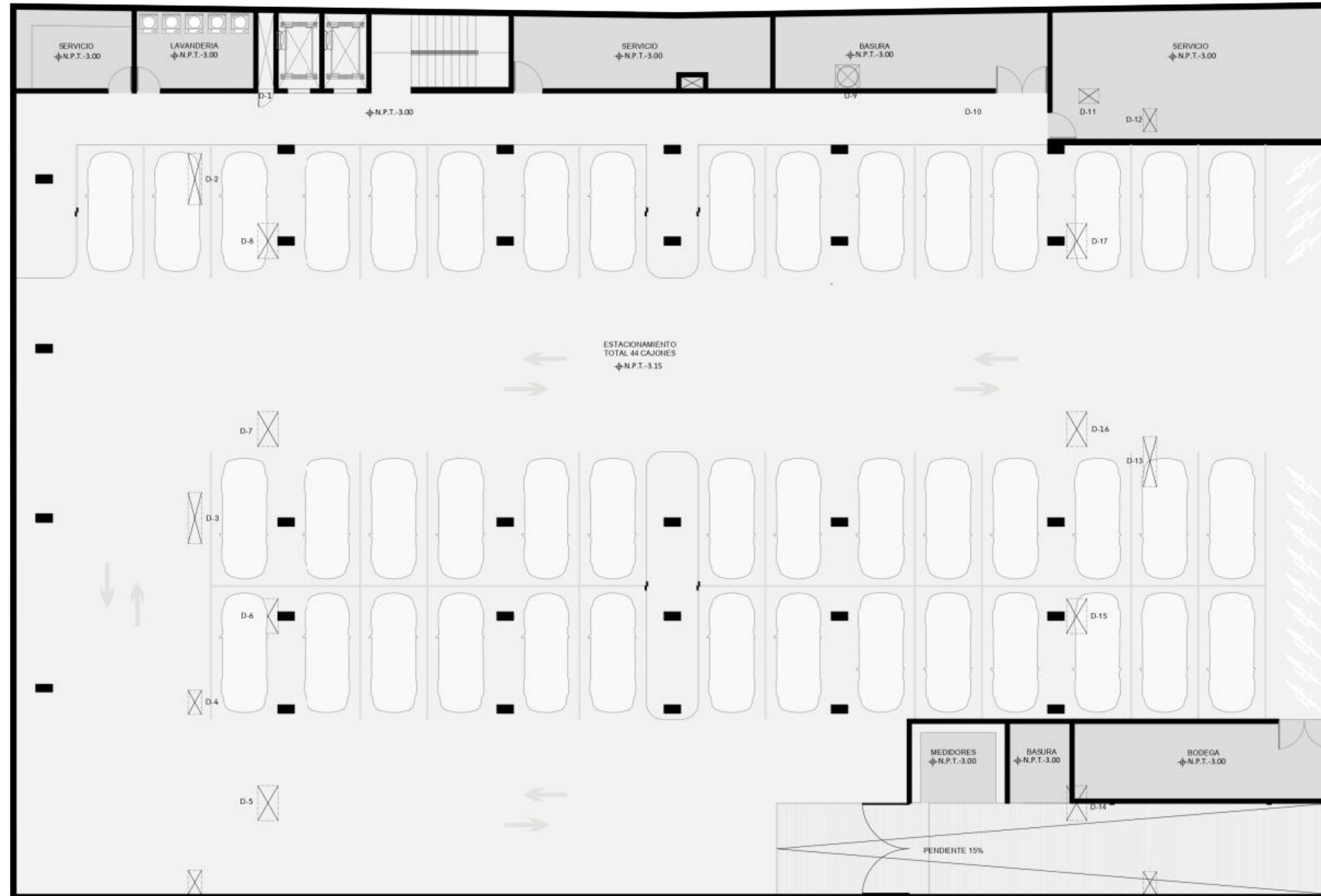
10th Avenue

22<sup>nd</sup> Street

24<sup>th</sup> Street

Vehicle Access

5th Avenue

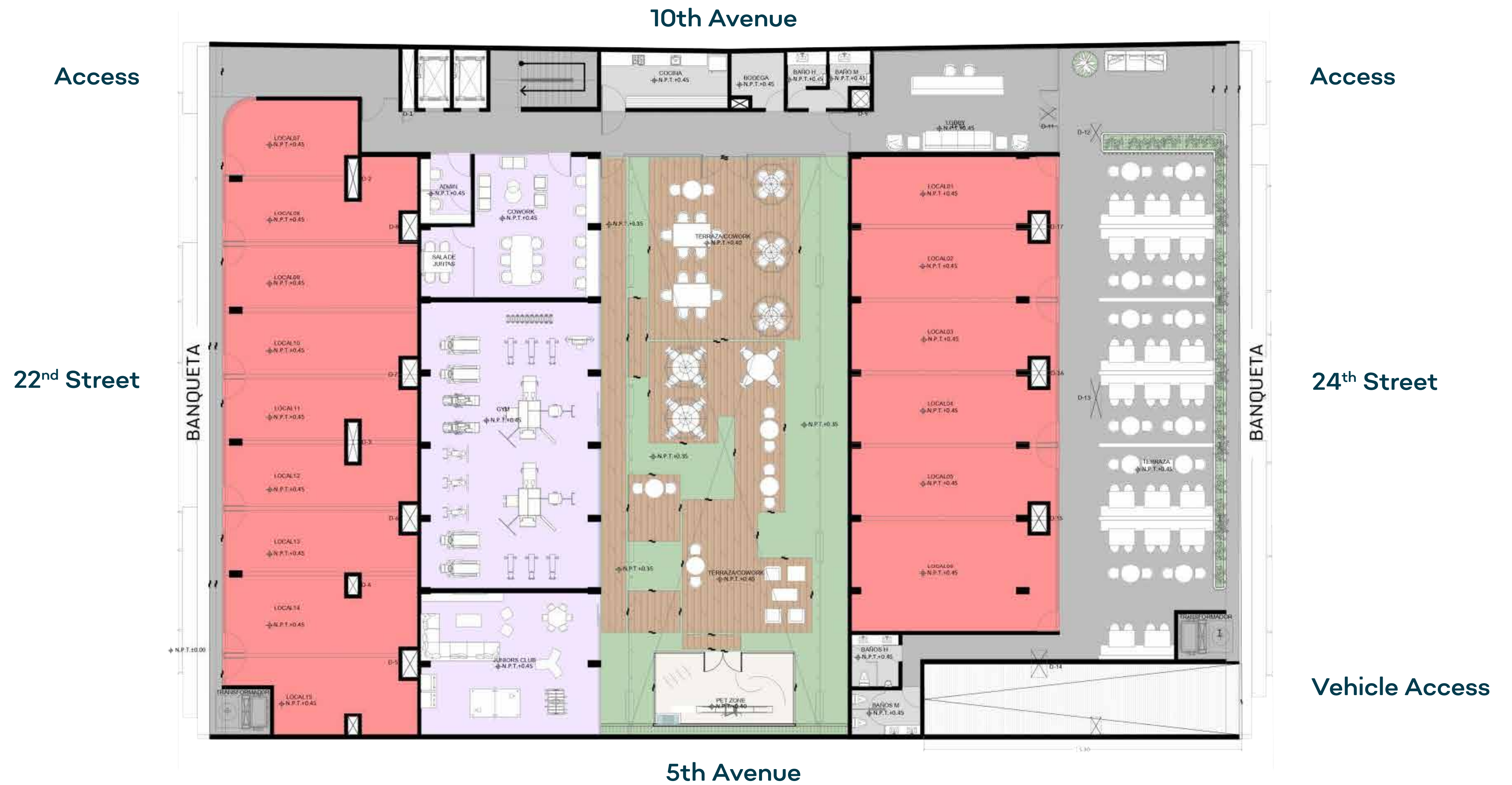


## Basement floor

### Parking, Laundry, Bicycle Area

44 Parking Spaces, Laundry Room, Bicycle Storage Area, Garbage Containers





## Ground floor

**Lobby, Terraces, Pet Zone, Coworking, Gym, Junior Club, Bathrooms**

Pedestrian access on 22nd and 24th Street, vehicle access on 24th street and commercial premises

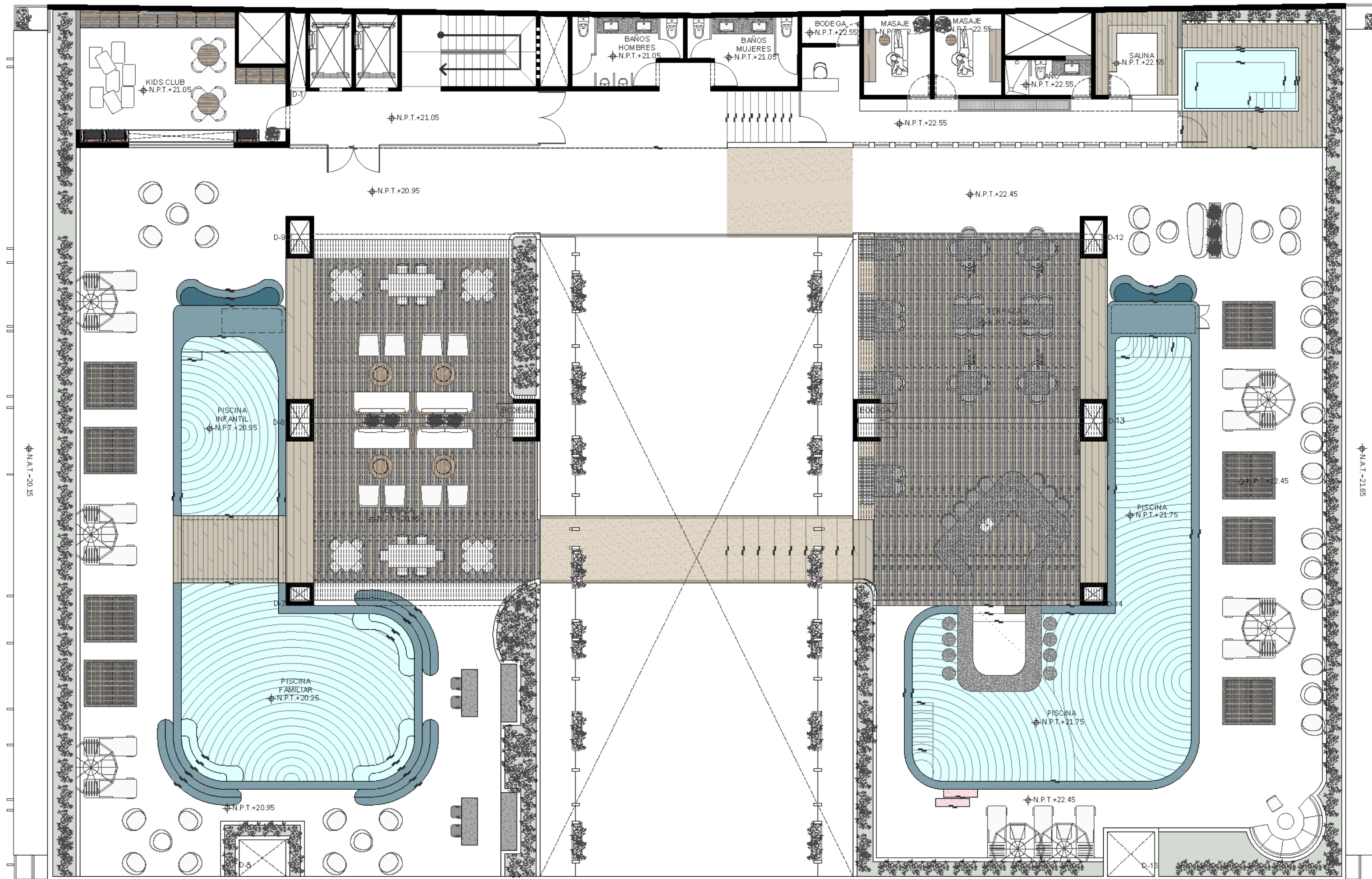


10th Avenue

22<sup>nd</sup> Street

24<sup>th</sup> Street

5th Avenue



## Rooftop floor

**Pool, Jacuzzi, Spa, Sauna, Kids Club, Bar, Terraces, Hammock Area, Sunbathing Area, Barbecue Area**

Family pool with children's area, indoor and outdoor bar, 2 massage rooms, access ramps

**SONNI**



10th Avenue

22<sup>nd</sup> Street

24<sup>th</sup> Street

5th Avenue



# Floor Level 1

Types by level: Studios, 1 bedroom and 2 bedroom lock-off



# Equipment & *finishes*

- Fridge
- Microwave
- Electric grill with hood
- Ceiling fan
- Air-Conditioning
- Closets
- Bookcase
  
- Quartz plateau
- Marble floors
- Bathrooms with luxury finishes





**Studio**

All images presented are for illustrative purposes only and may change without prior notice.

**SONNI**



**Studio**

All images presented are for illustrative purposes only and may change without prior notice.

**SONNI**



# Apartment

All images presented are for illustrative purposes only and may change without prior notice.

**SONNI**



# Apartment

All images presented are for illustrative purposes only and may change without prior notice.

**SONNI**



# Apartment

All images presented are for illustrative purposes only and may change without prior notice.





# Apartment

All images presented are for illustrative purposes only and may change without prior notice.

**SONNI**



# SONNI

PLAYA DEL CARMEN

[Link to Promocional](#)



# Meet the Developer

**+300** UNITS DELIVERED

**08** DEVELOPMENTS DELIVERED

**08** DEVELOPMENTS IN CONSTRUCTION

**Ekasa.**

DESARROLLOS INMOBILIARIOS

